

The staircase in the home is a showstopper with modern, geometric elements that add architectural interest to the space.

STORY **DENISE O'CONNELL**  
PHOTOGRAPHY **JASON HARTOG**

Having worked with Goli Basiri and Kia Kazemian of **Harmen Design Inc.** on a number of projects, Mahmoud and his wife Narges knew they would be perfect for creating their new Mid-century modern dream home. *Continued on page 30*

# MODERN-DAY MID-CENTURY



Hardwood set in a chevron pattern adds to the modern aesthetic. **BELOW LEFT:** Goli Basiri and Kia Kazemian are the principal designers of Harmen Design Inc. **BELOW RIGHT:** The island's gentle curve and dreamy blue are decidedly Mid-century modern.

**THE COUPLE** were living in Davisville Village but with a growing family, they needed something with more space. Mahmoud, a builder himself and a partner with **Lawrence Park Development**, knew what he wanted in a home, so they went in search of a property nearby that they could transform into their dream. They found a property on a kid-friendly street with permits already in place, which was ideal as it meant they could start the project as soon as possible.

Harmen Design's unique design process and utilization of high-end technology meant that Mahmoud and Narges could easily visualize the space before the work started.

Goli recounted that like so many design projects, this was a small job that became much larger. The permits specified a new stucco exterior but having been involved with major historical restoration in the past, Mahmoud felt that stucco would not keep in line with the heritage of the home or the neighborhood. So instead, Goli, Kia and Mahmoud got to work and decided to restore the original brick facade and elevate it by adding vertical fluted siding by **NewTechWood**. The proposed black metal roof on the third-floor addition, together with the black metal bay window and its canopy, tie the facade together.



A large window frames the dining area and floods the space with natural light. **BELOW LEFT:** Visitors are enveloped in warmth when they step inside the door. **CENTRE:** The exterior was refurbished to fit seamlessly with the neighbourhood. **RIGHT:** When closed, the door slides out of sight and becomes part of the kitchen backdrop.



Mahmoud also knew that he wanted a home that had a Mid-century modern feel to it with some contemporary elements. Mid-century modern is a significant design

movement that was popular during the mid-20th century in the post Second World War period. It's characterized by homes with large ample windows and open floor plans, and

furniture in wood, metal, glass and vinyl, often in curved shapes.

"The geometric shapes in this design really are the highlight," says Goli. *Continued on page 33*



**"THE GEOMETRIC SHAPES IN THIS DESIGN REALLY ARE THE HIGHLIGHT," SAYS GOLI. "THE PATTERNS AND COLOURS REALLY DISTINGUISH THIS SPACE."**



Though Mid-century mod was part of the inspiration, modern takes hold with bold colours and patterns to add verve to the home's design. The curved vanity mirrors the kitchen island for continuity. **ABOVE:** Bold splashes of colour add to the minimalist décor. **LEFT:** Low built-ins along the length of the wall are beautiful and practical.

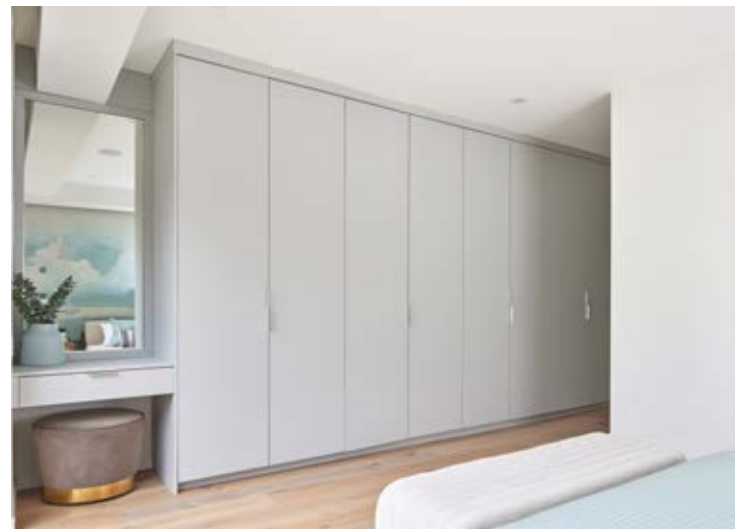



"The patterns and colours really distinguish this space."  
"We wanted a space with an organic feel to it; natural but with a pop of colour in different corners," says Mahmoud. "I wanted bigger windows to offer light and warmth throughout the house."  
Not wanting the duct work to dictate the ceiling height on the first floor and to also serve the mechanical needs of the house better, Harmen Design and Mahmoud reconfigured the second-floor layout and created a space for the mechanical designer to use for a second furnace.  
The entrance features a door with fluted wood, which is echoed throughout the home. A simple polished concrete floor works seamlessly with the Mid-century and minimalist feel. Simple white walls offer a canvas for the colourful art throughout. *Continued on page 34*



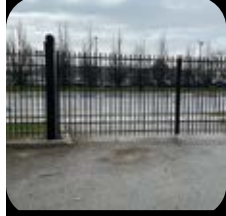


It's blue skies with a serene, dreamy blue mural in the primary bedroom. Floor-to-ceiling windows maximize the light and open the space. **BELOW:** Built-in closets provide plenty of storage and blend with the furnishings.

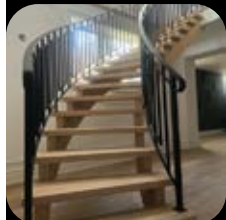


The simple grey concrete floor lies alongside a striking chevron hardwood floor by **Khayeri Curated Flooring** throughout the open-concept first floor. The kitchen by **Luxeme Kitchens Inc.** is minimalist with flat-faced cabinets and pendant lighting by **Hollis + Morris**. Built-in appliances supplied by **Tasco Appliances** blend with the surrounding cabinetry. The island in dusty blue with a distinct curved edge tips the hat to Mid-century design. Quartzite countertops, an organic stone that is similar in look to marble but is completely non-porous, feature a blue vein. Counter stools in a simple Scandinavian design offer an informal dining option. The eating area features a wall cove with hidden integrated lighting, all by **Linx Millwork**, and provides a perfect transition between the kitchen and the front of the house. Rattan dining chairs and bench seating around the Bok dining table by Ethnicraft Furniture continues the Mid-century feel. A hidden pantry door creates a continuous uniform wall. *Continued on page 36*



 *BTL Railings Inc.*

**PROFESSIONALLY DONE INTERIOR & EXTERIOR WROUGHT IRON RAILINGS**







External Staircases • Interior Staircases • Gates  
Glass Railings • Window Railings • Balcony • Fences

**647.890.3921**  
info@btrailingsinc.ca | btrailingsinc.ca  
29 Nashville Avenue, Toronto

**UNIQUE • ORIGINAL • EXCEPTIONAL**  
An unrivalled selection from Ontario artists



Also Offering... Superior Studio Programs & Workshops



**META4**  
CONTEMPORARY CRAFT GALLERY

**META4 CONTEMPORARY CRAFT GALLERY**  
200 Queen St., Port Perry, ON | 905-985-1534  
meta4gallery.ca | SHOP ONLINE



**LAWRENCE PARK DEVELOPMENT**

Design | Build | Project Management

416.629.2982  
www.LawrenceParkDevelopment.com

   @LPDCanada



The living room is a simple space with large sliding patio doors to bring the outdoors in. The windows feature a black matte aluminum frame to make them stand out against the white walls. The rounded sectional sofa by Ethnicraft reflects the curves in the space and wraps around the organic shape of the coffee table from **Unique Art & Deco** and is completed with a set of minimalist chairs composed of white oak and bouclé fabric. The fireplace is set into a corner with a polished concrete surround and fluted wood cabinets below by Linx Millwork double as bench seating for entertaining.



The stairs to the second floor are a work of art, with the steps creating a zigzag pattern in black that reinforces the geometric theme. Glass railings keep the space clean and minimalist. The door to the powder room is hidden neatly and almost disappears under the stairs. Inside, the bathroom features a curved countertop and vanity with a green polished concrete vessel sink that reflects the terrazzo floor.

Upstairs, the primary bedroom offers softer luxury and a coastal feel with greens and blues. A huge floor-to-ceiling window lets the light in and overlooks the stunning backyard oasis. Hardwood flooring is laid traditionally, and a focal wall featuring a mural depicting blue skies is shown off by hidden lighting in the bulkheads. To gain lots of closet space, the closet sits floor-to-ceiling across the wall facing the bed and features a make-up station built in on its far west corner next to the natural light of the window. The en suite features a luxury yet subtle terrazzo porcelain on the floor and on the walls in a herringbone pattern.

“Harmen Design’s unique visualization style and detailed drawings ensured our home was built exactly as we had envisioned it,” says Mahmoud. “The home fits perfectly with its surroundings, and we have a unique space to call home.” **OH**

**LEFT:** Rather than the traditional alcove that’s often tight on space and light, glass creates spaciousness in the shower. **ABOVE:** A floating vanity in a pale wood adds warmth to the en suite.



# Harmen

INTERIOR DESIGN SERVICES



great consignment  
*Classic to quirky!*



LOVED YOU MADLY



designer exchange & consignment boutique

16 Bruce St. N. Unit 1  
Harbour Mews, Thornbury



harmendesign.com @harmen.design

129 Lakeshore Rd W, Oakville, 289 885 3342